

COVID-19 Monthly Report - April 2020

All data submitted to SHR by 18 May 2020

Number of landlords issued with returns
 Number of landlords who submitted returns

171
171

Annual comparison figures are derived from data provided to us by the landlords in the Annual Return on the Charter and from the Scottish Government's published statistics on homelessness.

Links:

[Annual Return on the Charter \(ARC\)](#)

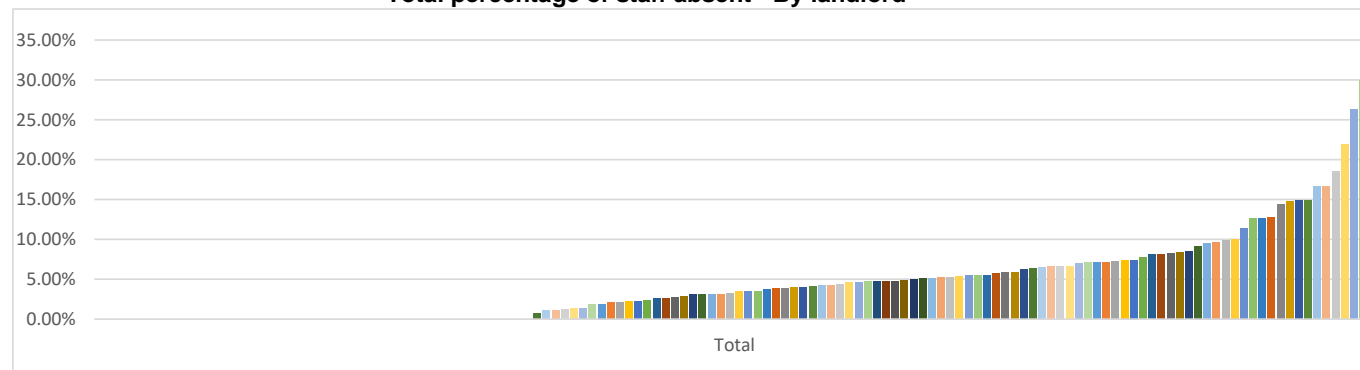
[Scottish Government's published statistics on homelessness.](#)

Staff (RSL only)

Total number of staff absent
 Lowest staff absence (%)
 Highest staff absence (%)
 Total % staff absent

640.94
0.00%
30.00%
5.28%

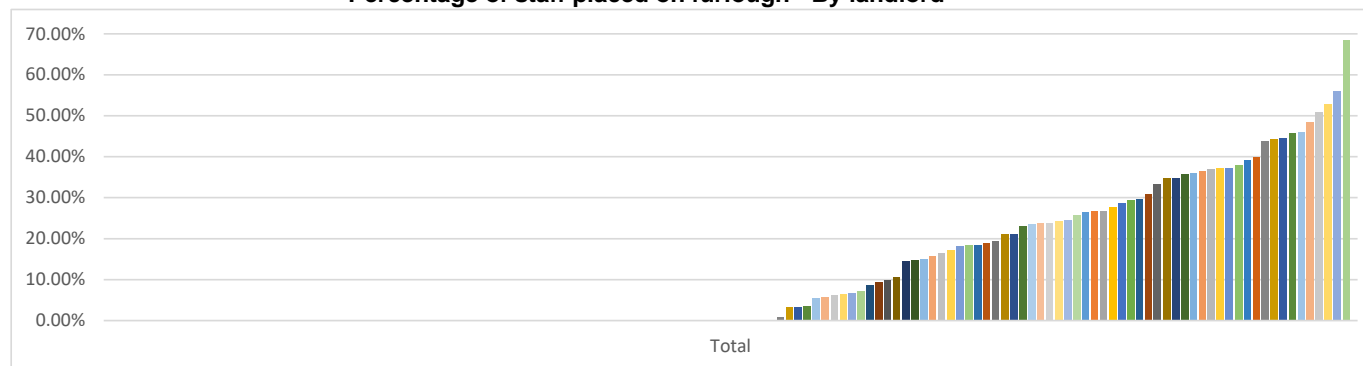
Total percentage of staff absent - By landlord



Number of staff placed on furlough
 Lowest % of staff placed on furlough
 Highest % of staff placed on furlough
 % of staff placed on furlough

1,633
0%
68%
13.46%

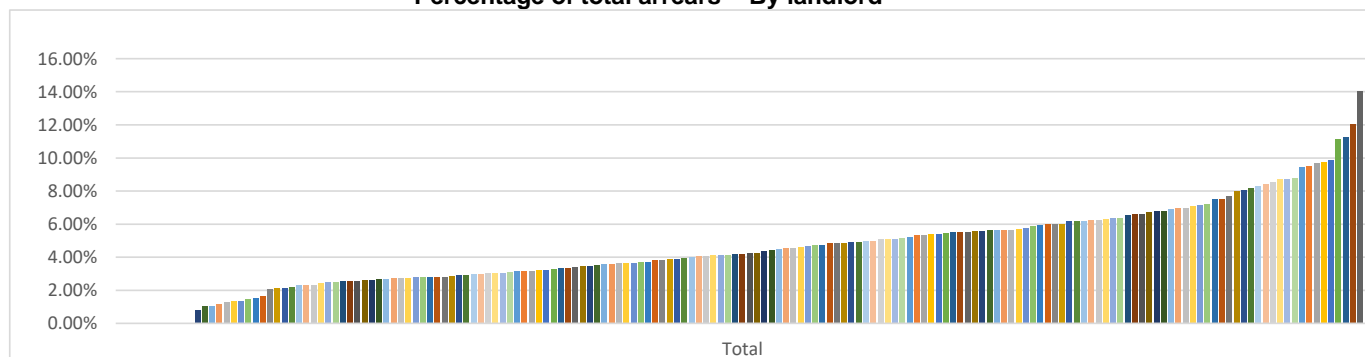
Percentage of staff placed on furlough - By landlord



Rent Arrears

	<u>RSLs</u>	<u>Local Authorities</u>	<u>Combined</u>	<u>At end March 2019</u>
Total arrears (£)	£60,486,320.51	£87,238,131.31	£147,724,451.82	£137,328,386.00
Lowest landlord arrears (%)	0.00%	2.55%		
Highest landlord arrears (%)	11.28%	14.04%		
Total landlord arrears (%)	4.48%	7.18%	5.76%	5.72%

Percentage of total arrears - By landlord



Empty Homes

	<u>RSLs</u>	<u>Local Authorities</u>	<u>Combined</u>	<u>During 2018/19</u>
Total number arising in month	1,198	882	2,080	50,462
Total number at end of month	3,700	4,673	8,373	6,167

Lets

	<u>RSLs</u>	<u>Local Authorities</u>	<u>Combined</u>	<u>During 2018/19</u>
Total number in month	331	415	746	56,193
Total number to homeless (SST)	77	308	385	19,629
Total number to homeless (short SST)	3	7	10	
Total number leased to LA	216			

Homelessness (LA only)

Total number of homeless applications received in the month	2,293	9,236	01 April to 30 June 2019
Total number of households offered and accepted temporary accommodation in the month	2,853		
Total number of households offered and refused temporary accommodation in the month	401		
Total number of households not offered temporary accommodation when needed in the month	8	865*	01 April to 30 June 2019
Total number of households in temporary accommodation on the last day of the month	12,261	11,079	At 30 June 2019

*Number of instances where a household has not been offered temporary accommodation during 1 April 2019 to 30 June 2019. A household can have multiple instances.

Definitions

Total number of staff (FTE)	Permanent or temporary staff employed by the RSL or by any of its subsidiaries as at 31 March each year which carry out duties for the RSL. The number of staff should be reported in terms of full-time equivalents (FTE). For example, if the hours of two people working part-time are added together that might be the same as one full-time job.
Total number absent (FTE)	Number of staff (FTE) not available to work, because of ill-health, care responsibilities, compassionate leave, other reasons (excluding those placed on furlough)
Percentage of staff absent	To calculate the percentage we will divide the total number absent (FTE) by the total number of staff (FTE) and multiply by 100.
Number of staff placed on furlough (FTE)	Number of staff place on furlough in accordance with the UK Government's furlough scheme
Gross rent arrears	Gross rent arrears consists of the value (to the nearest £) of current and former tenant rent arrears as at the end of each month or the closest end of debit period prior to any arrears write-off. Rent paid in advance should not be used to offset the overall value.
Total rent due	Total rent due is the value (to the nearest £) of the total annual charges levied by the landlord in respect of rent and service charges for dwellings.
Gross rent arrears (%)	To calculate the percentage we will divide the total value of gross rent arrears by the total rent due for the year and multiply by 100.
Empty Homes	The number of empty dwellings that arose during the last month in self-contained lettable stock.
Empty homes (last day of month)	The total number of empty dwellings in self-contained lettable stock on the last day of the reporting month.
Total lets	Total number of new tenancies commenced during the reporting month.
Lets to homeless (SST)	Total number of lets during the reporting month to households assessed as statutory homeless by the local authority and to whom the LA has a duty to provide permanent housing.
Lets to homeless (short SST)	Total number of lets during the reporting month to households assessed as statutory homeless by the local authority and to whom the LA has a duty to provide permanent housing.
Leased to relevant local authority	Number of properties leased during the reporting month to the local authority

Number of homeless applications received in the month	Total number of homelessness applications taken by the local authority under the homeless persons legislation in the reporting month.	
Number of households offered and accepted temporary accommodation* in the month	This part of the return corresponds with the Scottish Government's HL3 return (the monitoring of households placed in temporary accommodation as part of local authorities' duties under the homeless persons' legislation). The Scottish Government's "guidance on how to complete the HL3 return" definitions should be applied when supplying this information. Local authorities should provide the relevant information monthly.	Link
Number of households offered and refused temporary accommodation* in the month	This part of the return corresponds with the Scottish Government's HL3 return (the monitoring of households placed in temporary accommodation as part of local authorities' duties under the homeless persons' legislation). The Scottish Government's "guidance on how to complete the HL3 return" definitions should be applied when supplying this information. Local authorities should provide the relevant information monthly.	Link
Number of households not offered temporary accommodation* when needed in the month	This part of the return corresponds with the Scottish Government's HL3 return (the monitoring of households placed in temporary accommodation as part of local authorities' duties under the homeless persons' legislation). The Scottish Government's "guidance on how to complete the HL3 return" definitions should be applied when supplying this information. Local authorities should provide the relevant information monthly.	Link
Total number of households in temporary accommodation on the last day of the month*	This part of the return corresponds with the Scottish Government's HL2 return (the monitoring of households placed in temporary accommodation as part of local authorities' duties under the homeless persons' legislation). The Scottish Government's "guidance on how to complete the HL2 return" definitions should be applied when supplying this information. Local authorities should provide the relevant information monthly.	Link

* households placed in temporary accommodation as part of local authorities' duties under the homeless persons' legislation

